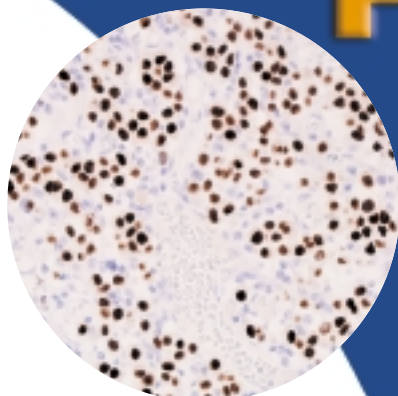


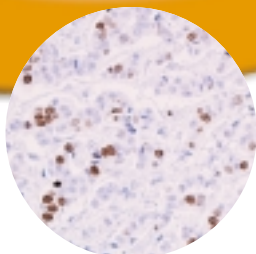
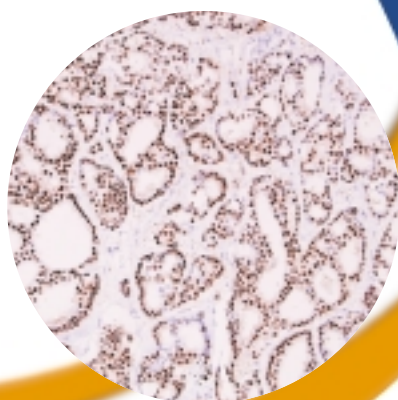
RabMAbs for

Breast Pathology

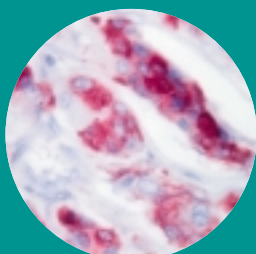
Formalin-fixed, paraffin embedded human invasive ductal breast carcinoma, stained with **RabMAb Estrogen Receptor, SP1**



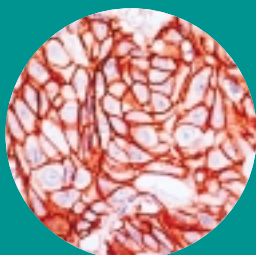
Formalin-fixed, paraffin embedded human invasive ductal breast carcinoma, stained with **RabMAb Progesterone Receptor, SP2**



Formalin-fixed, paraffin embedded human tonsil, stained with **RabMAb Ki-67, SP3**



Formalin-fixed, paraffin embedded human breast carcinoma, stained with **RabMAb COX2, SP21**



Formalin-fixed, paraffin embedded human breast carcinoma, stained with **RabMAb c-erbB-2, SP3**

A new class of high performance antibodies is available for breast cancer diagnosis:

Rabbit Monoclonal Antibodies

Estrogen Receptor, **SP1**

Progesterone Receptor, **SP2**

Ki-67, **SP6**

c-erbB2, **SP3**

RabMAbs combine the high affinity of rabbit antibodies and very high monoclonal specificity previously only seen with mouse antibodies. These combined advantages account for the superior performance of RabMAbs in IHC.

Lab Vision Corporation was the first IVD-certified company to introduce RabMAbs. Rabbit monoclonals with SP clone designation are exclusive to Lab Vision.

Rabbit Monoclonal Antibodies:

- *High* affinity
- *High* sensitivity
- *Superior quality staining*
- *High* working dilutions
- Cost effective

MARKERS FOR BREAST PATHOLOGY

DESCRIPTION	CLONE	INDICATION	CODE NO.
Bcl-2 oncoprotein	100/D5	Prognostic marker	MS-123
Calponin	CALP	Myoepithelial marker, in situ vs infiltrating breast carcinoma	MS-1168
Cathepsin D	(RPAb)	Prognostic markers	RB-9051
CD105 (Endoglin)	SN6h	Neoangiogenesis. Prognostic marker	MS-1290
c-erbB-2 oncoprotein *	SP3	Prognostic factor and predictor of treatment response	RM-9103
COX2	SP21	Predictor of treatment response	RM-9121
Cytokeratin 7	OV-TL 12/30	Breast differentiation Marker	MS-1352
Cytokeratin 20	Ks20.8	Breast differentiation Marker	MS-377
E-Cadherin	(RPAb)	Positive on ductal, negative on lobular breast cancer	RB-9214
EGFR	111.6	Prognostic marker in certain carcinomas	MS-378
Estrogen Receptor *	SP1	Prognostic and predictive marker	RM-9101
Ki-67	SP6	Cell proliferation marker	RM-9106
MDM2 protein	(RPAb)	Cell cycle regulator	RB-9218
Paxillin	5H11	Possible predictor of treatment response	MS-404
Progesterone receptor *	SP2	Prognostic and predictive marker	RM-9102
pS2	PS2.1	Estrogen inducible protein	MS-111
p27-Kip1	DCS-72.F6	Prognostic marker	MS-256
p53 protein	SP5	Predictor of long-term outcome	RM-9105
p63	4A4+ Y4A3	Myoepithelial specific marker In situ vs infiltrating breast carcinoma	MS-1084 RUO

REFERENCES

1. Spieker-Poet H, et al. "Rabbit monoclonal antibodies: Generating a fusion partner to produce rabbit-rabbit hybridomas", Proc Natl Acad Sci. 1995 Sept; 92(20):9348-52

2. Cano G., et al. "Estimation of Hormone Receptor Status in Fine-Needle Aspirates and Paraffin-embedded Sections from Breast Cancer Using the Novel Rabbit Monoclonal Antibodies SP1 and SP2", Diagn Cytopathol, 2003 Oct; 29(4):207-11

3. Cheuk W., et al "Consistent Immunostaining for Cyclin D1 Can Be Achieved on a Routine Basis Using a Newly Available Rabbit Monoclonal Antibody" Am J Surg Pathol 2004 June 28(6):801-07

4. Budd G.T. et al "Using Novel Protein Antibodies on Tissue Microarrays (TMAs) for Breast Cancer Prognostication" Abstract presented at ASCO, Annual Meeting, June 2004, New Orleans

5. Lerwill M.F "Current Practical Application of Diagnostic Immunohistochemistry in Breast Pathology" Amer J Surg Pathol, 28 (8), 2004, 1076-1091

6. Tarr S. M., et al "Evaluation of a New Rabbit Monoclonal Antibody (SP3) against HER2 in Adenocarcinoma of the Breast: an Immunohistochemical (IHC) Study" Abstract presented at Association for Molecular Pathology Meeting, Los Angeles, 2004

Note: These products are intended for *in vitro* diagnostic use. The products marked with an "*" are classified as ASR's by the FDA in the United States.

Lab Vision Corporation
47790 Westinghouse Drive
Fremont, CA 94539 USA
tel. 800 828 1628
tel. 510 991 2800
fax 510 991 2826
labvision@labvision.com

Lab Vision UK Ltd.
The Pines, Fordham Road
Newmarket, Suffolk CB8 7LG
United Kingdom
tel. 44 1638 721195
fax 44 1638 721196
labvision@labvision.co.uk

www.labvision.com
NEOMARKERS