

B-Cell Marker

Rabbit Monoclonal Antibody

CD79a/mb-1, clone SP18

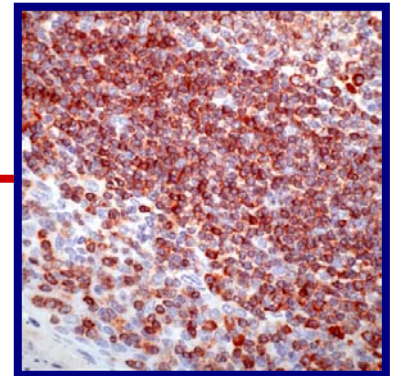
CD79a appears early at pre-B cell stage and persists until the plasma cell stage where it is found as an intracellular component. CD79a is found in the majority of acute leukemias of precursor B-cell type, in B-cell lines, B-cell lymphomas and in some myelomas.

Immunogen: Synthetic peptide derived from N-terminal region of human CD79a protein

Application: Immunohistochemistry. Formalin-fixed paraffin embedded tissue

Format:

- **RM-9118-S0, -S1 or S** (0,1 ml, 0,5 ml or 1,0 ml Supernatant)
- **RM-9118-R7** (7,0 ml Ready-to-use for Immunohistochemical staining)
- **RM-9118-PCS** (5 slides) Positive control for Histology



T-cell Marker

Rabbit Monoclonal Antibody

CD3, clone SP7

The antibody reacts with the intracytoplasmic portion of the CD3 antigen expressed by T-cell. It stains human T-cell in both the cortex and the medulla of the thymus and in peripheral lymphoid tissue. The antibody is suitable for staining normal and neoplastic T-cells in formalin-fixed, paraffin embedded tissue.

Immunogen: Synthetic 13-mer peptide corresponding to aa 156- 168 of the epsilon chain of the human CD3 protein

Application: Immunohistochemistry. Formalin-fixed paraffin embedded tissue

Format:

- **RM-9107-S0, -S1 or S** (0,1 ml, 0,5 ml or 1,0 ml Supernatant)
- **RM-9107-R7** (7,0 ml Ready-to-use for Immunohistochemical staining)
- **RM-9107-PCS** (5 slides) Positive control for Histology

