

# ANTIBODY TECHNOLOGY **RABBIT MONOCLONAL**

## Rabbit Monoclonal Antibodies (RabMAbs)

**Rabbit Monoclonal antibodies (RabMAbs)** are technologically advanced antibodies. This **new class** of reagents for diagnostic applications represents an important innovation in immunophenotyping, which emerged from efforts to develop antibodies suitable for diagnostics applications.

**Lab Vision Corporation** was the **first IVD-certified company** to introduce **RabMAbs**. Rabbit monoclonals with **SP clone designation** are exclusive to **Lab Vision**.

**RabMAbs** combine the **high affinity** of rabbit antibodies and very **high monoclonal specificity**, previously only seen with mouse antibodies. These combined advantages account for the superior performance of RabMAbs in IHC.

Technically RabMAbs provide superior performance:

- ↓ **affinity and specificity produce superior quality staining. These can be markedly demonstrated with clone SP1 for Estrogen Receptor. Low expressing tissues in particular show superb clarity of staining**
- ↓ **high sensitivity ensures perfect staining and economical use of antibody at higher working dilutions.**
- ↓ **the superior diagnostic capability of RabMAbs can be demonstrated using clone SP4 for Cyclin D1.**
- ↓ **RabMAbs are ideally suited and greatly simplify double staining methods in IHC**
- ↓ **for research purposes RabMAbs eliminate most of the problems associated using mouse antibodies on mouse tissues**

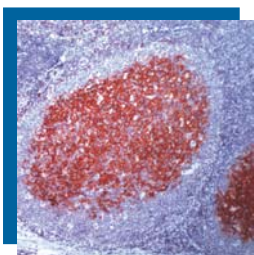
### Why Rabbit Monoclonals ?

Rabbits are known to have more complex immune system than mice. They produce a high affinity polyclonal response to challenge by immunogens. The complexity of clones produced and their high affinity enables selection of the most appropriate antibody, combining high sensitivity and specificity.

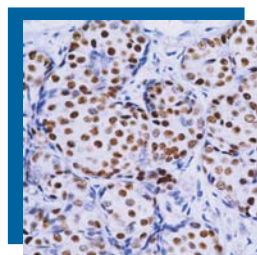
Advanced cloning methods have led to the successful fusion of rabbit-B lymphocytes and a rabbit plasmacytoma cell line (240E) to produce very stable rabbit-rabbit hybridoma to guarantee continuity and quality of RabMAb supply.

### References:

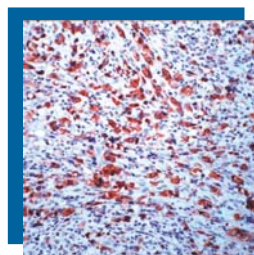
1. Spieker-Poet H, et al." Rabbit monoclonal antibodies: Generating a fusion partner to produce rabbit-rabbit hybridomas", Proc Natl Acad Sci. 1995 Sept 26; 92(20):9348-52
2. Cano G, et al." Estimation of hormone receptor status in fine needle aspirates and paraffin-embedded sections from breast cancer using the novel rabbit monoclonal antibodies SP1 and SP2", Diagn Cytopathol,2003 Oct;29(4):207-11
3. Cheuk W., et al " Consistent Immunostaining for Cyclin D1 can be achieved on a routine basis using newly available Rabbit monoclonal Antibody", .Am J Surg Pathol 2004 June 28(6):801-07



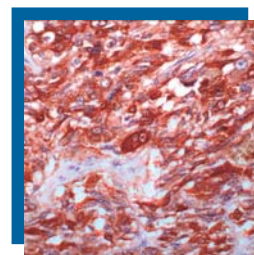
CD23 (SP23)



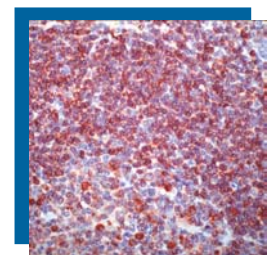
Estrogen Receptor (SP1)



ALK-80 (SP8)



Calcitonin (SP17)



CD79a (SP18)

# RABBIT MONOCLONAL

ANTIBODY TECHNOLOGY

## Rabbit Monoclonal Antibodies, clone **SP**

NEW

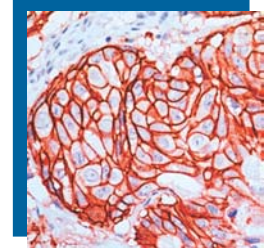
NEW

NEW

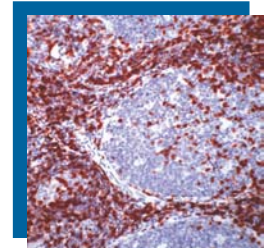
NEW

NEW

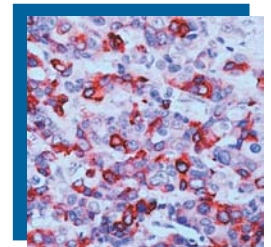
ANTIBODY	CLONE	CATALOG #
■ ALK-80	SP8	RM-9108
■ c-erbB-2	SP3	RM-9103
■ Calcitonin	SP17	RM-9117
■ Calretinin	SP13	RM-9113
■ CD3	SP7	RM-9107
■ CD5	SP19	RM-9119
■ CD8	SP16	RM-9116
■ CD23	SP23	RM-9123
■ CD79a	SP18	RM-9118
■ Chromogranin A	SP12	RM-9112
■ COX-2	SP21	RM-9121
■ Cyclin D1	SP4	RM-9104
■ Estrogen Receptor	SP1	RM-9101
■ Ki-67	SP6	RM-9106
■ p53	SP5	RM-9105
■ Placental Alk. Phosphatase (PLAP)	SP15	RM-9115
■ Progesterone Receptor	SP2	RM-9102
■ Synaptophysin	SP11	RM-9111
■ Vimentin	SP20	RM-9120



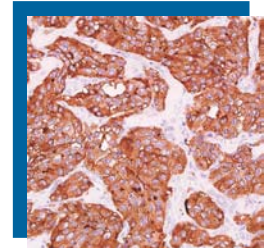
c-erbB-2 (SP3)



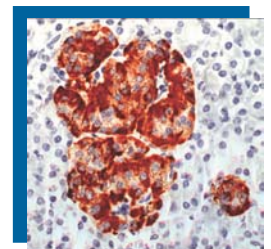
CD5 (SP19)



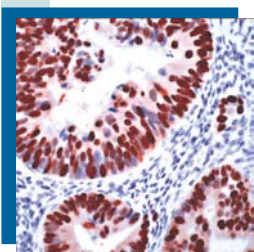
COX-2 (SP21)



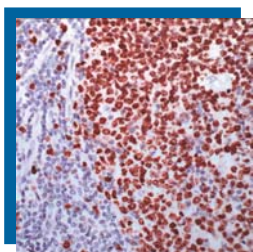
Synaptophysin (SP11)



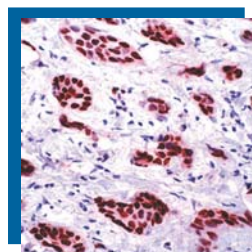
Chromogranin A (SP12)



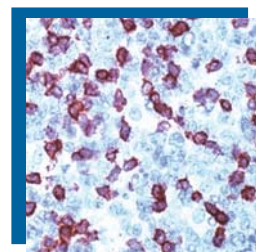
p53 (SP5)



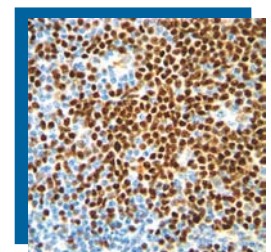
Ki-67 (SP6)



Progesterone Receptor (SP2)



CD3 (SP7)



Cyclin D1 (SP4)